

6 Door Bell operation

Press the button on the bell press transmitter. The door bell will sound and the indicator light on the unit will flash.

Flashing	Mode
Slow	◀
Fast	Someone rings
Alternate	Low receiver battery

7 Important Notes Before First Time Use

1. Do not use rechargeable batteries, do not mix old and new batteries or different types. Alkaline batteries are recommended in the receiver for a longer operating life.
2. The operation and range of your wireless door bell depends on location, temperature and battery condition.
3. Do not expose the unit to rain or immerse either unit in water.
4. Avoid locations where the bell press transmitter is exposed to direct summer sunlight.
5. Do not leave exhausted batteries in door bell receiver or bell press transmitter.
6. Clean only with a damp cloth and mild detergent. Do not use solvents.

8 Product Notes

1. Suitable for indoor installation only. 2. Handle the door bell gently and carefully. Dropping it can damage the circuit boards and can cause the door bell to work improperly. 3. Keep the door bell away from dust and dirt, which can cause premature wear of parts. 4. Use only fresh batteries of the recommended size and type. Always remove old or weak batteries. They can leak chemicals that can destroy electronic circuits. 5. Modifying or tampering with the door bell's internal components can cause a malfunction and might invalidate its warranty. 6. This product contains no serviceable parts and no attempt should be made to repair this product. If the product is faulty it should be discarded. 7. The material in this product may vary in colour from batch to batch. Colour matching from one batch to another cannot be guaranteed. 8. Legrand reserves the right to modify the specifications of this product at any time. 9. This product utilises intellectual property in the form of registered designs, trademarks, and/or patents. Such intellectual property remains the property of Legrand in all cases.

Warranty

Legrand Australia warrants this product for a period of 3 years from the date of purchase.

These goods come with guarantees that cannot be excluded under the Australian and New Zealand Consumer Laws. You are entitled to a replacement or a refund for a major failure and for compensation for any other reasonably foreseeable loss or damage. You are also entitled to have the goods repaired if the goods fail to be of acceptable quality and the failure does not amount to a major failure.

See the Warranty card enclosed with this product for further details.

Customer Service

For all Customer Service and Technical Support please call Monday to Friday during business hours.

Legrand Australia
1300 369 777
www.hpm.co.au

Legrand New Zealand
0800 476 009
www.hpm.co.nz

ABN: 31 000 102 661

08/2019

LE1101034AAA



A brand of **legrand**

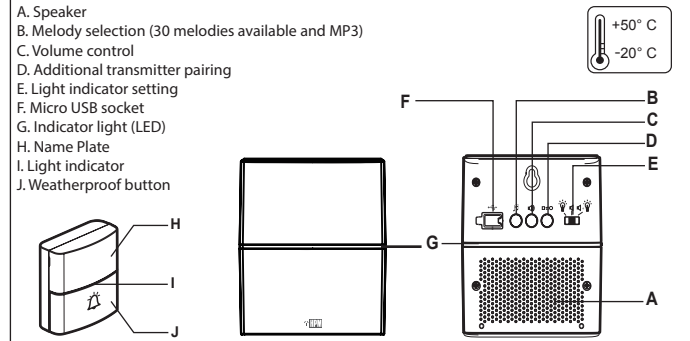
Wireless Door Bell - Serenity

Battery Operated

Cat. No. D643/WES, D643/ALS, D643/BPWES

Instruction Manual

Please read all instructions carefully before installation and use.



1 Specification

- Radio operating range: 200 m free field
- Receiver sound power: 80 dB @ 1m
- Frequency band: 433.05 - 434.79 MHz
- RF power level: < 10 mW
- Degree of protection: IP54 (Transmitter), IP20 (Receiver)
- Receiver installation: Wall mounted / Free standing
- Transmitter installation: Wall mounted / Adhesive / Free standing

Box contents:

- 1 x Bell press
- 1 x Door bell receiver
- USB type A Cable
- 3 x Wall plugs and 3 x Screws
- 1 x Double sided tape

Battery requirement:

- Battery for transmitter: 1 x 3 V battery (CR2032) included
 - Battery for receiver: 3 x 1.5 V AA batteries (not included)
- Do not use rechargeable batteries.

2 Features

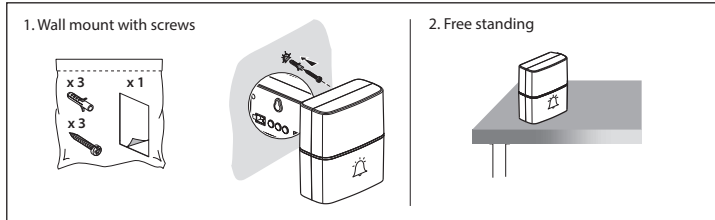
- Battery operated / Wireless operation
- Range 200m in free field
- 30 melodies
- Name tag insert
- Slimline
- Easy to install - no wires or cables
- No signal interference for neighbours
- Can be used as a door bell or panic switch

3 Before Installation

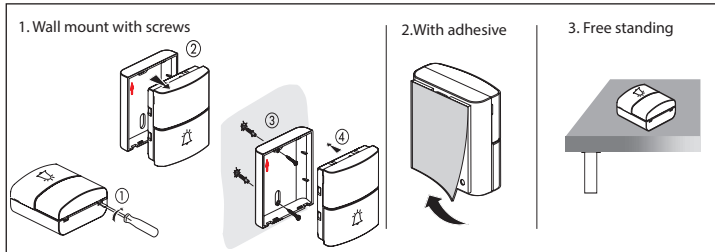
- Test the location of both units to ensure satisfactory operation before permanently fixing either unit in place.
- Do not mount the bell press transmitter on metal or near a metal door frame, security door or in close proximity to any metal outdoor furniture. The range of the unit may be substantially reduced.

4 Installation

A. DOOR BELL RECEIVER

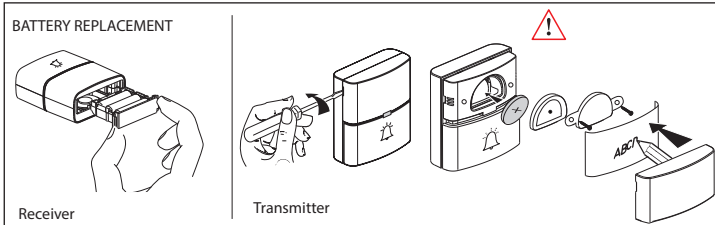


B. DOOR BELL TRANSMITTER

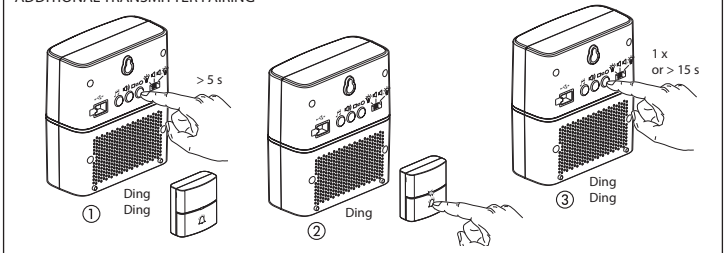


5 Operating Instructions

BATTERY REPLACEMENT

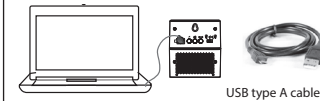


ADDITIONAL TRANSMITTER PAIRING

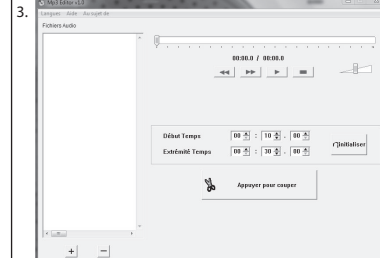


ADDIING MP3 MELODIES

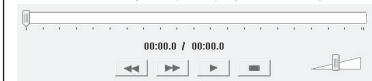
1. Install the software on a computer using usb cable supplied, from the internal memory of the door bell.



2. Click on the icon to launch the software



4. Click + to import an MP3 melody in the selection window.
5. Select the melody and press play, (mandatory 1 time)



6. Set the duration of your melody by selecting the beginning and the end and click $\lt; \times >$



7. The software asks you to confirm where to save the new MP3 file: Receiver memory.

8. To set the MP3 melody, select it with the B button.

